

AUSTRALIAN MADE



AND PROUD OF IT

**ModuLube V96-20**

# **ModuLube**

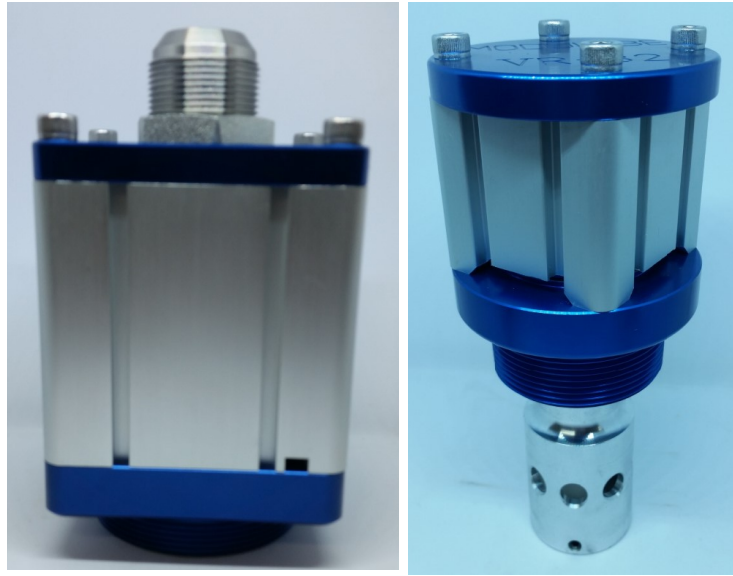
167 MAISON DIEU ROAD  
SINGLETON NSW 2330

PH: 02 65711002

sales@garlands.cc

## **V96-20 / VR32**

**AUTO SHUT OFF BULK FILL VALVE &  
TANK BREATHER / RELIEF VALVE**



**FOR BULK & LARGE CAPACITY GREASE TANKS  
DESIGNED AND MANUFACTURED IN AUSTRALIA  
TO ADDRESS THE SPECIFIC NEEDS OF THE MINING INDUSTRY**

- \* RUGGED CONSTRUCTION
- \* EASE OF MAINTENANCE
- \* IMMEDIATE SHUT OFF WHEN TANK IS FULL
- \* SIMPLE INSTALLATION
- \* NO OVERFLOW / SPILLAGE

THE OPERATION OF THE VALVE IS AUTOMATIC.

THE VALVE WILL ALLOW GREASE TO FLOW INTO THE RECEIVING TANK WHEN THE BULK SUPPLY HOSE IS CONNECTED TO THE FILL POINT.

WHEN THE TANK IS FULL, PRESSURE WILL BUILD TO A MAXIMUM OF 3 TO 4 PSI IN THE TANK AND THE VALVE WILL CLOSE OFF THE FLOW OF GREASE INTO THE TANK. THE LINE BETWEEN THE VALVE AND FILL POINT WILL BUILD UP TO STALL PRESSURE OF THE SUPPLY PUMP.

PRESSURE GAUGE FITTED AT FILL POINT WILL INDICATE VALVE HAS SHUT OFF AND TANK IS FULL.

TO DISCONNECT FILL HOSE, TURN OFF BULK SUPPLY PUMP AND OPEN BLEED VALVE AT FILL POINT TO VENT RESIDUAL LINE PRESSURE.

VALVE WILL RESET AUTOMATICALLY AS GREASE LEVEL LOWERS.

**MAXIMUM OPERATING PRESSURE 1,000 psi  
TANK OPERATION PRESSURE 3 TO 4 PSI  
TANK RELIEF PRESSURE 10 PSI**

V96-20      INLET = 1-5/8" JIC      TANK MOUNT = 3" BSP  
VR32        TANK MOUNT = 2" BSP