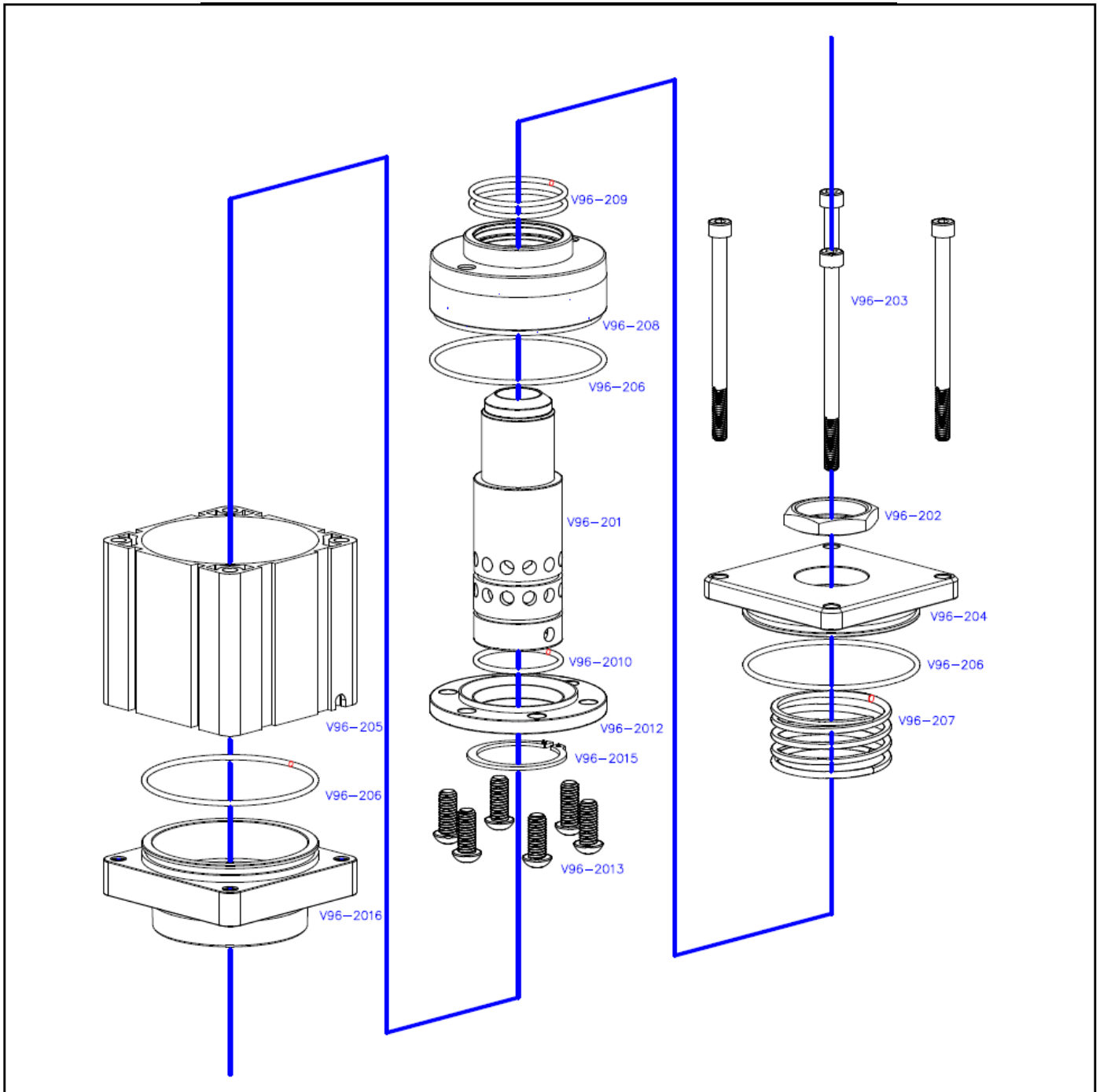


ModuLube Lubrication

V96-20 PARTS BREAKDOWN



ITEM #	DESCRIPTION	QTY	ITEM #	DESCRIPTION	QTY
V96-201	SHAFT	1	V96-208	UPPER PISTON	1
V96-202	SHAFT NUT	1	V96-209*	UPPER PISTON INNER O-RING	2
V96-203	SS TIE BOLT	4	V96-2010*	SHAFT O-RING	1
V96-204	CYLINDER HEAD	1	V96-2012	LOWER PISTON	1
V96-205	CYLINDER	1	V96-2013	BUTTON HEAD CAP SCREWS	6
V96-206*	O-RING (PISTON & HEAD)	3	V96-2015	CIRCLIP	1
V96-207	SS SPRING	1	V96-2016	CYLINDER BASE 3" BSP	1

* INDICATES ITEMS AVAILABLE IN V96-200R O-RING KIT

V96-20 ModuLube BULK GREASE FILL SHUT OFF VALVE

ASSEMBLY INSTRUCTIONS

1. Clean shaft (V96-201) around o-ring groove with acetone. Slide o-ring (V96-2010) up to edge of groove on shaft (V96-201).
2. Apply Loctite 480 to bottom of o-ring groove, move o-ring (V96-2010) into groove and allow to cure for 5 minutes. (Clean excess Loctite if required)
3. Apply Silicone Lubricant to bottom section of shaft (V96-201), between o-ring groove and circlip groove.
4. Install o-rings (V96-209) in groove on top section of upper piston (V96-208).
Apply Silicone Lubricant to o-rings (V96-209).
5. Slide upper piston (V96-208) over shaft (V96-201) and halfway down. (Don't touch o-ring)
6. Apply Loctite 577 sealant around spigot on lower piston (V96-2012).
7. Place lower piston (V96-2012), spigot side down, over shaft (V96-201) and align holes with upper piston (V96-208).
8. Install cap screws (V96-2013) into piston assembly and tighten.
9. Install circlip (V96-2015) into groove on shaft (V96-201).
10. Install o-ring (V96-206) onto piston assembly.
11. Clean shoulder of shaft (V96-201) and apply Loctite 577 sealant.
12. Install spring (V96-207) over shaft (V96-201) and down on to top of upper piston (V96-208).
13. Install o-ring (V96-206) into groove in cylinder head (V96-204).
14. Install cylinder head (V96-204) over threaded end of shaft (V96-201),
install nut (V96-202) and tighten.
15. Apply Silicone Lubricant to o-rings (V96-206) on cylinder head (V96-204) and piston assembly.
16. Apply Silicone Lubricant to internal surface of cylinder (V96-205).
(Breather end - 20 to 25mm down from top)
17. Slide cylinder (V96-205) over piston assembly and push until cylinder slides over o-ring (V96-206) on cylinder head (V96-204). (Breather end towards cylinder head (V96-204)).
18. Install o-ring (V96-206) onto base (V96-2016) and apply Silicone Lubricant.
19. Apply Silicone Lubricant to ends of cap screws (V96-203) and install through bolt holes in cylinder head (V96-204) and align with bolt holes in base (V96-2016).
20. Tighten bolts diagonally to prevent valve distortion.
21. Test movement of piston assembly by depressing with bar or screwdriver. Piston must move towards head of valve when pushed and spring back into position when released with no resistance.

MANUFACTURED, SOLD & SERVICED BY

GARLAND ENGINEERING

E: sales@garlands.cc

www.modulube.com.au



Modulube Lubrication