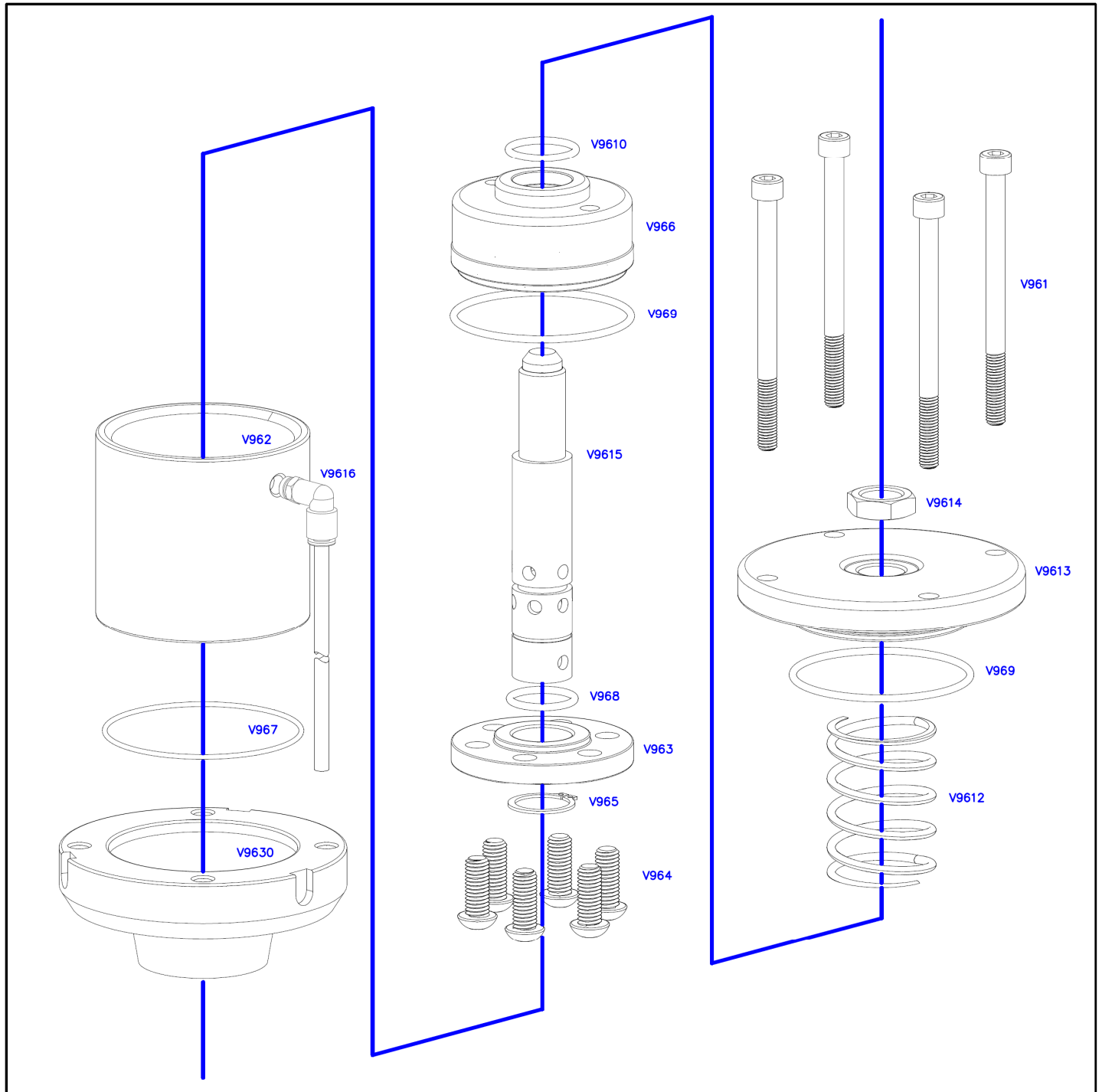


# ModuLube Lubrication

## V96 GREASE FILL SHUT OFF VALVE



ITEM #	DESCRIPTION	QTY	ITEM #	DESCRIPTION	QTY
V961	SS TIE BOLTS	4	V969*	OUTER PISTON & HEAD O-RING	2
V962	CYLINDER	1	V9610*	UPPER PISTON INTERNAL O-RING	1
V963	LOWER PISTON	1	V9612	SS SPRING	1
V964	BUTTON HEAD CAP SCREWS	6	V9613	CYLINDER HEAD	1
V965	CIRCLIP	1	V9614	SHAFT NUT	1
V966	UPPER PISTON	1	V9615	VALVE SHAFT	1
V967*	CYLINDER O-RING	1	V9616	BREATHER VENT & TUBE	1
V968*	SHAFT O-RING	1	V9630	CYLINDER BASE 2" BSP	1

\* INDICATES ITEMS AVAILABLE IN V96OR O-RING KIT

# V96 ASSEMBLY INSTRUCTIONS

1. Clean shaft (V9615) around o-ring groove with acetone. Slide o-ring (V968) up to edge of groove on shaft (V9615).
2. Apply Loctite 480 to bottom of o-ring groove, move o-ring into groove and allow to cure for 5 minutes. (Clean excess Loctite if required)
3. Apply Silicone Lubricant to bottom section of shaft (V9615), between o-ring groove and circlip groove.
4. Install o-ring (V9610) in groove on top section of upper piston (V966). Lubricate o-ring (V9610) with Silicone Lubricant.
5. Slide upper piston (V966) over shaft (V9615) and halfway down. (Don't touch o-ring)
6. Clean spigot side of lower piston (V963) and apply Loctite 577 sealant around spigot.
7. Place lower piston (V963), spigot side down, over shaft (V9615) and align holes with upper piston (V966).
8. Install cap screws (V964) into piston assembly and tighten.
9. Install circlip (V965) into groove on shaft (V9615).
10. Install o-ring (V969) onto piston assembly.
11. Clean shoulder of shaft (V9615) and apply Loctite 577 sealant.
12. Install spring (V9612) to top of upper piston (V966).
13. Install o-ring (V969) into groove in cylinder head (V9613).
14. Install cylinder head (V9613) over threaded end of shaft (V9615), install nut (V9614) and tighten.
15. Install breather vent (V9616) into port on cylinder (V962).
16. Lubricate o-rings (V969) on cylinder head (V9613) and piston assembly with Silicone Lubricant.
17. Lubricate cylinder (V962) with Silicone Lubricant. (Breather end - 20 to 25mm down from top).
18. Slide cylinder (V962) over piston assembly and push until cylinder (V962) slides over o-ring (V969). (Breather end towards cylinder head (V9613)).
19. Slightly stretch o-ring (V967) and install into o-ring groove on base of cylinder (V962).
20. Place base (V9630) over o-ring end of cylinder (V962) and turn over
21. Lubricate ends of cap screws (V961) with Silicone Lubricant and install through bolt holes in cylinder head (V9613) and align with bolt holes in base (V9630).
22. Tighten bolts diagonally to prevent valve distortion. Check that o-ring (V967) has not popped out between base (V9630) and cylinder (V962).
23. Test movement of piston assembly by depressing with bar or screwdriver. Piston must move towards head of valve when pushed and spring back into position when released with no resistance.
24. Install breather tube to breather vent (V9616).

**MANUFACTURED, SOLD & SERVICED BY**

**GARLAND ENGINEERING**

E: [sales@garlands.cc](mailto:sales@garlands.cc)

[www.modulube.com.au](http://www.modulube.com.au)



Modulube Lubrication